

## Crio Tech 1 Glass Door Digital Freezer, 670lt (-20/-15) Remote

ITEM #

MODEL #

NAME #

SIS #

AIA #



728845 (CTE71GFR)

1-glass door freezer  
670L, -20-15°C, digital, AISI  
304, remote

### Short Form Specification

#### Item No.

Full glass door freezer entirely constructed in 304 AISI stainless steel with bottom panel in anti-corrosive material. Large digital white-digit display with cabinet temperature display and setting. HACCP-compliant control with alarms and history. IQ Defrost to defrost only when required with automatic evaporation of defrost water. Airflow System: back to front forced air flow and removable air conveyors provide even temperature distribution and fast cooling in any conditions. Fitted with 75 mm-thick cyclopentane insulating foam. Door features lock and door microswitch to switch off the fan when the door is opened. Hidden evaporator to guarantee higher storage capacity and less corrosion problems. Remote unit; ventilated operation; Internal LED light and internal back light. Operating temperature: -20/-15°C. CFC and HCFC free. R404a gas in refrigeration circuit. Prearranged to fit RS485 port to facilitate connection to a remote computer and integrated HACCP systems.

### Main Features

- Large storage area suitable to contain 2/1 GN grids or shelves on anti-tilt runners.
- Performance guaranteed at ambient temperatures of +32°C.
- Right hinged glass door with heated frame.
- Cabinet fitted with up to 75 mm thickness of cyclopentane insulation for best insulating performance with 100% environmental protection (thermal conductivity: 0,020 W/m\*K).
- Adjustable temperature range from -15°C to -20°C to suit all storage requirements.
- 60 mm-thick insulation covering the evaporator can be easily removed with a single operation.
- Large digital white-digit display with cabinet temperature display and setting, manual activation of defrost cycle, turbo frost cycle (to rapidly cool warm loads) and internal light switch.
- Prearranged to fit RS485 port to facilitate connection to a remote computer and integrated HACCP systems.
- Airflow: back to front forced air flow and removable air conveyors provide even temperature distribution and fast cooling in any conditions.
- IQ Defrost: fully automatic defrost starts only when ice is actually building-up in the evaporator.
- Connectivity ready for real time access to connected appliances from remote and data monitoring (requires optional accessory).
- Internal structure with 44 charging positions available to host grids, ensuring higher net capacity and a greater storage space.
- Possibility to select 3 different levels of humidity according with the type of food stored inside.
- Alpeninox Fridge Control APP make the life easier for our customers (available from April 2024):
  - Monitor safety of preservation process thanks to HACCP data & alarms for precise control
  - Save time and easy data management having the possibility to send the HACCP information in excel format directly to e-mail address
  - Quick operations: set the cabinet temperature/turbocooling and set date/hour
- Large digital white-digit display with cabinet temperature display and setting, activation of turbo frost cycle (to rapidly cool warm loads) and possibility to activate manually the defrost cycle.

APPROVAL:

Part of



Electrolux  
Professional  
Group

**ALPENINOX**  
www.alpeninox.com

### Construction

- Interior base with rounded corners, pressed from a single sheet.
- Lockable door.
- Refrigerant type: R404a.
- Constructed from the highest quality AISI 304 Stainless steel.
- Easy access to the main components for maintenance.
- Stainless steel runners and supports easily disassembled.
- The rounded internal corners, the easily removable runners, grids and air conveyors allow for ease of cleaning and high hygiene standards.
- Anti-corrosion bottom avoids any damage that may be caused to the cabinet by aggressive detergents employed to clean the floors.
- Remote refrigeration unit.

### Sustainability

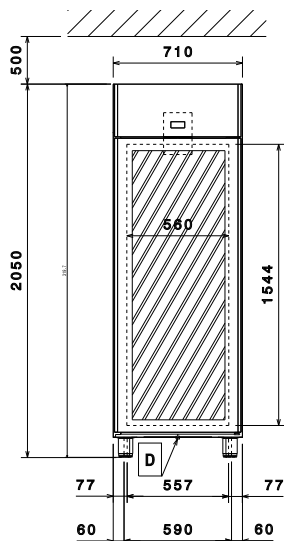
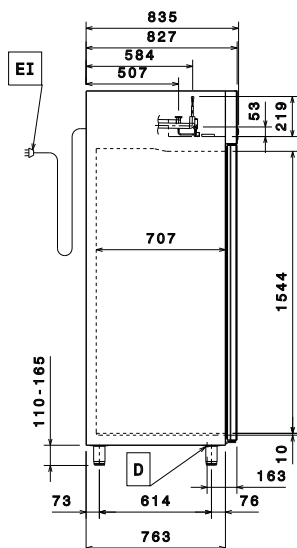
- CFC and HCFC-free insulation.
- Interior LED light to save energy and for best internal visibility.
- Door switch stops the fan when door is opened to avoid cold air exiting the cell, thus saving energy.
- Removable triple-chamber balloon magnetic gasket to improve insulation and reduce energy consumption and ease of cleaning.

### Included Accessories

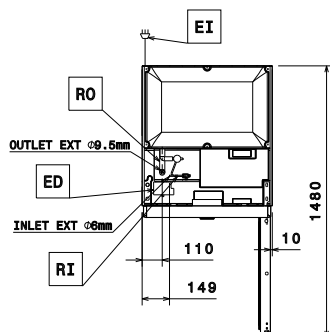
- 3 of AISI 304 stainless steel grid with 2 runners, 2/1GN PNC 881018

### Optional Accessories

- |   |            |                          |
|---|------------|--------------------------|
| • 2 stainless steel runners for refrigerated cabinets - (Marine)                    | PNC 880242 | <input type="checkbox"/> |
| • 1/1GN set of 8 PVC containers for fish  | PNC 880243 | <input type="checkbox"/> |
| • Spacer for 670L and 1430L refrigerated cabinets                                   | PNC 880248 | <input type="checkbox"/> |
| • Pedal opening for cabinets  | PNC 880324 | <input type="checkbox"/> |
| • Plastic container with false bottom, 1/1GN  | PNC 880705 | <input type="checkbox"/> |
| • Kit to fit 10 pastry trays (400x600mm)  | PNC 881003 | <input type="checkbox"/> |
| • 2/1GN gray rilsan grid  | PNC 881004 | <input type="checkbox"/> |
| • AISI 304 stainless steel grid, 2/1GN  | PNC 881016 | <input type="checkbox"/> |
| • AISI 304 stainless steel grid with 2 runners, 2/1GN                               | PNC 881018 | <input type="checkbox"/> |
| • 2/1GN gray rilsan grid with 2 runners   | PNC 881020 | <input type="checkbox"/> |
| • Set of 2 stainless steel runners for 670/1430L refrigerators and freezers         | PNC 881021 | <input type="checkbox"/> |
| • Kit of 4 small swivelling wheels (2 with brake), diam 50mm, NOT for remote models | PNC 881035 | <input type="checkbox"/> |
| • PVC container with lid and 2 runners, 2/1GN                                       | PNC 881039 | <input type="checkbox"/> |
| • 2/1GN perforated shelf  | PNC 881042 | <input type="checkbox"/> |
| • 1/1GN rilsan steel wire basket h150mm   | PNC 881043 | <input type="checkbox"/> |
| • 2/1GN gray rilsan basket + 2 runners h150mm                                       | PNC 881047 | <input type="checkbox"/> |
| • Glass door protection kit   | PNC 881163 | <input type="checkbox"/> |

**Front****Side**

**EI** = Electrical inlet (power)  
**RI** = Refrigerant Inlet  
**RO** = Refrigerant Outlet

**Top****Electric**

Supply voltage:

728845 (CTE71GFR)

220-240 V/1 ph/50/60 Hz

Electrical power max.:

0.305 kW

**Key Information:**

Gross capacity:	670 lt
Door hinges:	Right Side
External dimensions, Width:	710 mm
External dimensions, Depth:	835 mm
External dimensions, Depth with Doors Open:	1480 mm
External dimensions, Height:	2050 mm
Number and type of doors:	1 Glass
Number and type of grids (included):	3 - GN 2/1
Type of external material:	304 AISI
Type of internal material:	304 AISI
Internal panels material:	304 AISI
Number of positions & pitch:	44; 30 mm

**Refrigeration Data**

Control type:	Digital
Refrigeration power at evaporation temperature:	-30 °C
Operating temperature min.:	-15 °C
Operating temperature max.:	-20 °C
Refrigeration type:	R404A; R452A
Operating mode:	Ventilated
N° defrost in 24 hrs:	
Suggested refrigeration power:	785 W
Condition at evaporation temperature:	-30 °C
Condition at condensation temperature:	55 °C
Condition at ambient temperature:	32 °C
Connection pipes (remote) - outlet:	9.5 mm
Connection pipes (remote) - inlet:	6 mm
*Note:	Ref. Power calculated at a linear distance of 15 mt (piping)